

GRANT'S KILLS ANTS® & SPIDERS

**VALUE
SIZE!**
25% MORE
than 14 oz.
size



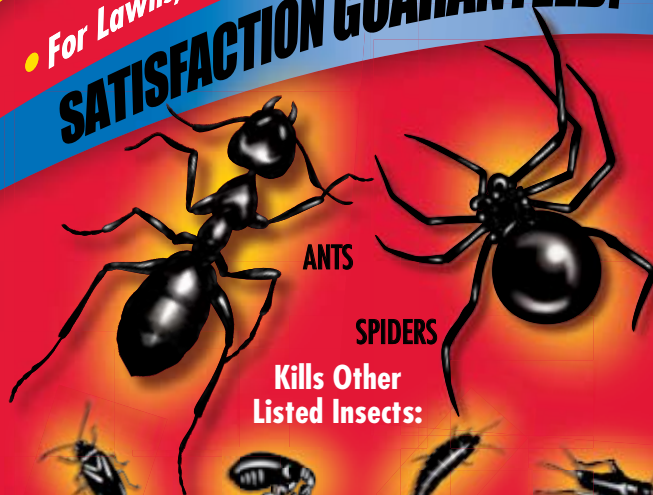
FROM
AMDRO®

GRANULES

KILLS ON CONTACT!

- Fast Acting
- Deep Reaching Formula
- For Lawns, Flower Gardens & Home Perimeter

SATISFACTION GUARANTEED!



ANTS

SPIDERS

**Kills Other
Listed Insects:**



CHINCH BUGS



FLEAS



SILVERFISH



CRICKETS



SOWBUGS



EARWIGS



TICKS



GRASSHOPPERS



MILLIPEDES



CHIGGERS



CUTWORMS



PILLBUGS

ACTIVE INGREDIENTS:
Bifenthrin* 0.1%
OTHER INGREDIENTS: 99.9%
TOTAL: 100.0%

*Cis isomers 97% minimum, trans isomers 3% maximum.
FOR OUTDOOR RESIDENTIAL LAWN, HOME PERIMETER,
ORNAMENTAL & FLOWER GARDENS

By Wt.
0.1%
99.9%
100.0%

**KEEP OUT OF REACH OF CHILDREN
CAUTION** See back panel for Additional
Precautionary Statements and First Aid

For Chemical Spill, Leak, Fire, or Exposure, Call CHEMTREC (800) 424-9300.
For Medical Emergencies Only, Call (877) 325-1840
For Non-Medical Emergencies, Call (888) 648-9865

NET WEIGHT 17.5 OZ. (496 grams)

GRANT'S KILLS ANTS® & SPIDERS

GRANULES



- Provides a Barrier of Protection Around Your Home
- Solves Your Insect Problems FAST
- Kills in 24 Hours
- Keeps Lawn Insects Away for Up to 2 Months

PRECAUTIONARY STATEMENTS HAZARDS TO HUMANS AND DOMESTIC ANIMALS

CAUTION

Harmful if absorbed through skin. Causes moderate eye irritation. Avoid contact with skin, eyes or clothing. Wash thoroughly with soap and water after handling and before eating, drinking, chewing gum or using tobacco. Remove and wash contaminated clothing before reuse.

FIRST AID	
IF ON SKIN OR CLOTHING:	<ul style="list-style-type: none"> • Take off contaminated clothing. • Rinse skin immediately with plenty of water for 15 to 20 minutes. • Call a poison control center or doctor for treatment advice.
IF IN EYES:	<ul style="list-style-type: none"> • Hold eye open and rinse slowly and gently with water for 15 to 20 minutes. • Remove contact lenses, if present, after the first 5 minutes, then continue rinsing eye. • Call a poison control center or doctor for treatment advice.
HOT LINE NUMBER	
Have the product container or label with you when calling a poison control center or doctor, or going for treatment. You may also contact 1-877-325-1840 for emergency medical treatment information.	
NOTE TO PHYSICIAN	
This product is a pyrethroid. If large amounts have been ingested, milk, cream or other digestible fats and oils may increase absorption and so should be avoided.	

ENVIRONMENTAL HAZARDS

This pesticide is extremely toxic to fish and aquatic invertebrates. Do not apply directly to water. Do not contaminate water when disposing of equipment washwaters or rinsate.

DIRECTIONS FOR USE

It is a violation of Federal law to use this product in a manner inconsistent with its labeling.

This product is designed for use as a ready-to-use granular insecticide to control various insects and spiders on lawns, home perimeter, ornamental & flower gardens. See specific pests for recommended level. Irrigating or watering by 0.1 to 0.5 inches immediately after application generally improves the effectiveness of this product. Please read the following "Directions for Use" carefully and fully before applying this product.

In New York State, this product may NOT be applied to any grass or turf area (lawns) within 100 feet of a water body (lake, pond, river, stream, wetland, or drainage ditch).

In New York State, do make a single repeat application of this product if there are signs of renewed insect activity, but not sooner than two weeks after the first application.

Do not allow children or pets to enter the area until dry.

LAWN, HOME PERIMETER, ORNAMENTAL & FLOWER GARDENS SURFACE FEEDING INSECTS

Use this product for the control of ants, including Carpenter, Red Harvester, Odorous Pyramid, Pharaoh (Sugar) and Fire Ants*, Foraging Fire Ants, Armyworms (including Fall Armyworms), Billbug (including Bluegrass Billbug), Chiggers, Chinch Bugs, Crickets, Cutworms (including Black Cutworms), Earwigs, Grasshoppers, Mealybugs, Pillbugs, Silverfish, Sod Webworms (Lawn Moth), Sowbugs, and Weevils (including Hyperodes and Bluegrass). Uniformly apply 2 to 4 ounces over a 100 square foot area.

Treat when insects first appear and retreat as necessary. Repeat application is necessary only if there are signs of renewed insect activity. Repeat application should be limited to no more than once per seven days.

* Aids in control

Argentine Ants, Black Turf Ants, Black Turfgrass Ataenius, Fleas (including Cat Fleas), Leafhoppers, Spiders (including Brown Recluse spiders) and Ticks (including Brown Dog Ticks)

Uniformly apply 4 ounces over a 100 sq. ft. area. Best results are obtained if the treated area is thoroughly watered immediately after application.

Centipedes, Millipedes, Pavement Ants

Uniformly apply 8 ounces over a 100 sq. ft. area. Best results are obtained if the treated area is thoroughly watered immediately after application.

Mole Crickets (including Tawny Mole Crickets)

Uniformly apply 4 to 8 ounces over a 100 sq. ft. area. For best results: treat in late spring, and water the treated area immediately after application.

For Fire Ant Mounds

To control Fire ants, uniformly apply 1 tablespoon or 3 teaspoons** of this product to the surface of each mound. For best results, 1) apply in cool weather, 65 to 80°F, or in early morning or late evening hours, 2) avoid disturbing ants, 3) treat new mounds as they appear and 4) thoroughly water the treated area immediately after application.

**Food utensils such as tablespoons/teaspoons must not be used for food purposes after use in measuring pesticides.

Ornamental Flower Beds (Outdoors)

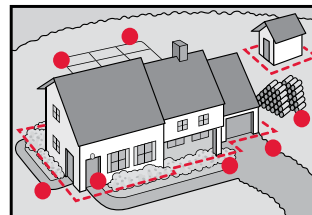
Pests Controlled: Ants, crickets, earwigs, grasshoppers, spiders and ticks.

How to Apply: Evenly apply 2 ounces of product for every 50 sq. ft. area. Repeat application as necessary only if there are signs of renewed insect activity. Repeat application should be limited to no more than once per seven days.

Home Invading Insects: Barrier Treatment Around House Foundation (Outdoors)

Pests Controlled: Ants, chiggers, crickets, earwigs, grasshoppers, spiders and ticks.

How to Apply: Evenly apply a 2-foot band of granules next to the house foundation. Use 2 ounces for each 50 sq. ft. (2 ft. X 25 ft.). If necessary, repeat applications every 2 weeks only if there are signs of renewed insect activity.



● Area Treatment - - - - Perimeter Treatment

**Kills Ants
Outside So
They Can't
Come Inside!**

STORAGE AND DISPOSAL

Do not contaminate water, food or feed by storage or disposal.

PESTICIDE STORAGE: Keep out of reach of children and animals. Store in original container only. Store in a cool, dry place and avoid excess heat. Carefully open containers. After partial use replace lids and close tightly. For bags after partial use, reseal open bag by folding top down and securing.

PESTICIDE CONTAINER DISPOSAL: If empty: Do not reuse this container. Place in trash or offer for recycling if available. If partly filled: Call your local solid waste agency for disposal instructions. Never place unused product down any indoor or outdoor drain.

The directions for use of this product must be followed carefully. TO THE EXTENT CONSISTENT WITH APPLICABLE LAW, (1) THE GOODS DELIVERED TO YOU ARE FURNISHED "AS IS" BY MANUFACTURER OR SELLER AND (2) MANUFACTURER AND SELLER MAKE NO WARRANTIES, GUARANTEES, OR REPRESENTATIONS OF ANY KIND TO BUYER OR USER, EITHER EXPRESS OR IMPLIED, OR BY USAGE OF TRADE, STATUTORY OR OTHERWISE, WITH REGARD TO THE PRODUCT SOLD, INCLUDING, BUT NOT LIMITED TO MERCHANTABILITY, FITNESS FOR A PARTICULAR PURPOSE, USE, OR ELIGIBILITY OF THE PRODUCT FOR ANY PARTICULAR TRADE USAGE, BUYER'S OR USER'S EXCLUSIVE REMEDY, AND MANUFACTURER'S OR SELLER'S TOTAL LIABILITY SHALL BE FOR DAMAGES NOT EXCEEDING THE COST OF THE PRODUCT.

If you do not agree with or do not accept any of directions for use, the warranty disclaimers, or limitations on liability, do not use the product, and return it unopened to the Seller, and the purchase price will be refunded.

Grant's and Amdro are registered trademarks of Central Garden & Pet.

Distributed by
GRANT LABORATORIES, INC.
14688 Washington Ave.
San Leandro, CA 94578
EPA Reg. No. 228-494-1663
EPA Est. No. 59144-GA-1A,
44616-MO-1a, 67572-GA-1c
Subscript used is first letter of
run code on container



0 72136 30037 8

257-01